





# IRAMA

**Length:** 41.80 metres (137' 2")

**Beam:** 8.40 metres (27' 7")

**Draft:** 2.9 metres (9' 8")

**Number of Guests:** 12

**Number of Crew:** 8

**Built:** 2009

**Refit:** 2020

**Builder:** Concept Marine

**Flag:** Maltese

**Hull Construction:** Wood

**Hull Configuration:** Displacement

Air conditioning, Deck Jacuzzi, Stabilisers at anchor, Stabilisers underway, WiFi connection on board

---

The 137'10 / 42m Custom motor yacht 'iRama' was built in 2009 by Concept Marine and just refitted in 2020. Previously named Elisea Nova Her elegant exterior and interior styling are the work of Concept Marine, who is also responsible for her engineering.

On the inside, IRAMA offers a welcoming and warm atmosphere, with luxurious touches of plush furniture, cushions and other luxury amenities and decorations. There is a separate elegant dining area adjacent to the main saloon

iRAMA has expansive deck areas, with a fabulous sun deck, hosting a large Jacuzzi with sun pads, seating and a dining area and a bar

Additional exterior living areas include the spacious aft main deck with a dining possibility and seating as well as a bow area. The swim platform offers easy access to the water and a great selection of water toys.

## ACCOMMODATION

Irama's interior layout sleeps up to 12 guests in 6 cabins, including a full beam master suite, 1 VIP stateroom, 2 deluxe staterooms, 1 double cabin and 1 twin cabin. She is also capable of carrying up to 7 crew onboard to ensure a relaxed luxury yacht experience. Timeless styling, beautiful furnishings and sumptuous seating feature throughout to create an elegant and comfortable atmosphere.

## PERFORMANCE

She is built with GRP hull and GRP superstructure. With a cruising speed of 15 knots, a maximum speed of 18 knots - she is the perfect combination of performance and luxury.



# KEY FEATURES

- 1 Four excellent outdoor entertaining areas
- 2 Full beam master stateroom with private study/reading room
- 3 Large VIP, equal to a master cabin





sundeck



Dining sundeck



main saloon



dining





Master



Master bath



VIP





Vip Bath



Stateroom 1

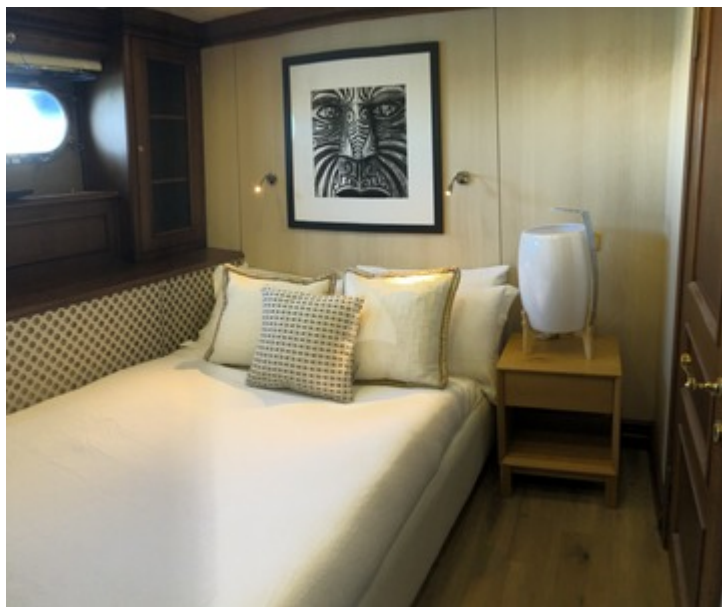


stateroom 2



stateroom bath





double cabin



Twin



guest bath



# SPECIFICATIONS

## ACCOMMODATION

**Number of Guests:** 12

**Number of Cabins:** 6

**Cabin Configuration:** 5 Double, 1 Twin

**Bed Configuration:** 2 King, 2 Queen, 1 Double, 2 Single

## EQUIPMENT

**Engines:** 2 x MTU 12V396 2257HP

2 x 65kW Onan Generators

Fuel consumption 300 L/H @ 12 Knots, 400 L/H @ 15 knots, 600 L/H @ 18 knots

**Cruising Speed:** 12 knots

**Fuel Consumption:** 400 Litres/Hr

## WATERSPORTS

**Tenders + Toys:** 1 williams Tender

2 x Sea-doo Jet skis

2 x inflatable rings

3 x wake boards

3 x waterski's

1 x electric skateboard

1 x knee board

3 x snorkelling equip

Anti Jelly fish pool

Floating jet ski dock



## **Disclaimer**

This document is not contractual. All specifications are given in good faith and offered for informational purposes only. The publisher and company do not warrant or assume any legal liability or responsibility for the accuracy, completeness, or usefulness of any information and/or images displayed. Yacht inventory, specifications and charter prices are subject to change without prior notice. None of the text and/or images used in this brochure may be reproduced without written consent from the publisher.