



KATINA

Length: 60.00 metres (196' 10")

Beam: 10.68 metres (35')

Draft: 2.9 metres (9' 6")

Number of Guests: 12

Number of Crew: 15

Built: 2015

Refit: 2021

Builder: Brodosplit BSO d.o.o.

Naval Architect: Boris Zanko

Flag: Marshall Islands

Hull Construction: Steel

Hull Configuration: Displacement

Air conditioning, Approved RYA water sports centre, Deck Jacuzzi, Elevator/lift, Gym/exercise equipment, Stabilisers at anchor, Stabilisers underway, Wheelchair accessibility, WiFi connection on board

Launched in 2015, this high volume yacht offers a huge array of facilities for charter guests, including 6 convertible staterooms (king, double or twin), gymnasium, sauna, massage room, elevator to all decks, whiskey & cigar room (with its own ventilation), inflatable slide and playground, huge selection of toys and deck spaces for up to 150 guests for events.

KEY FEATURES

- 1** 6 large staterooms all of which are convertible (king double or twin)
- 2** VIP staterooms have a fold-down sea balcony
- 3** Huge deck spaces to host up to 150 guests for parties
- 4** Gymnasium with running machine, elliptical trainer, rower, exercise bike and weights machine
- 5** Massage room and sauna
- 6** Inflatable slide from sundeck and inflatable playground
- 7** Whiskey and cigar room (with separate ventilation system)
- 8** Elevator connecting all decks



Profile



Profile



Profile



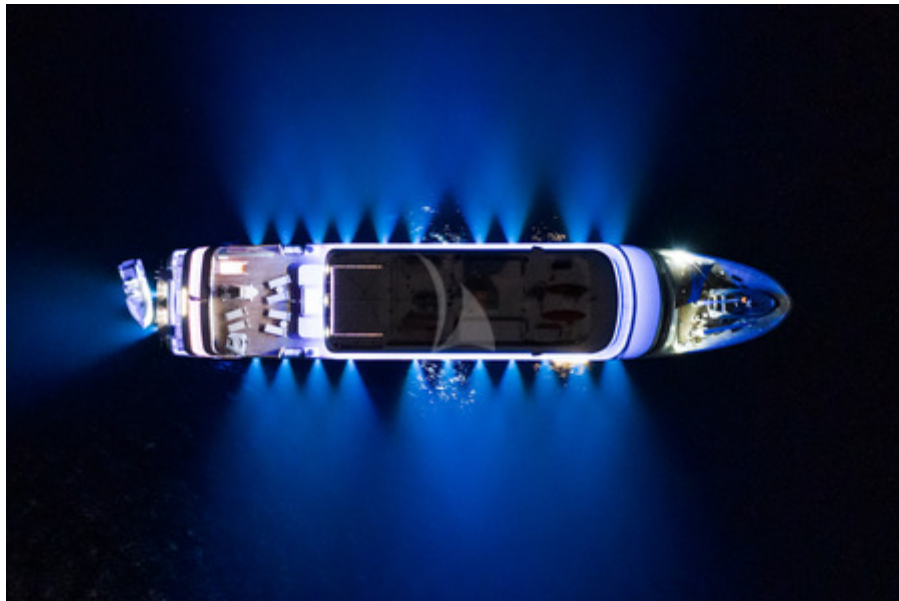
Bow wiew



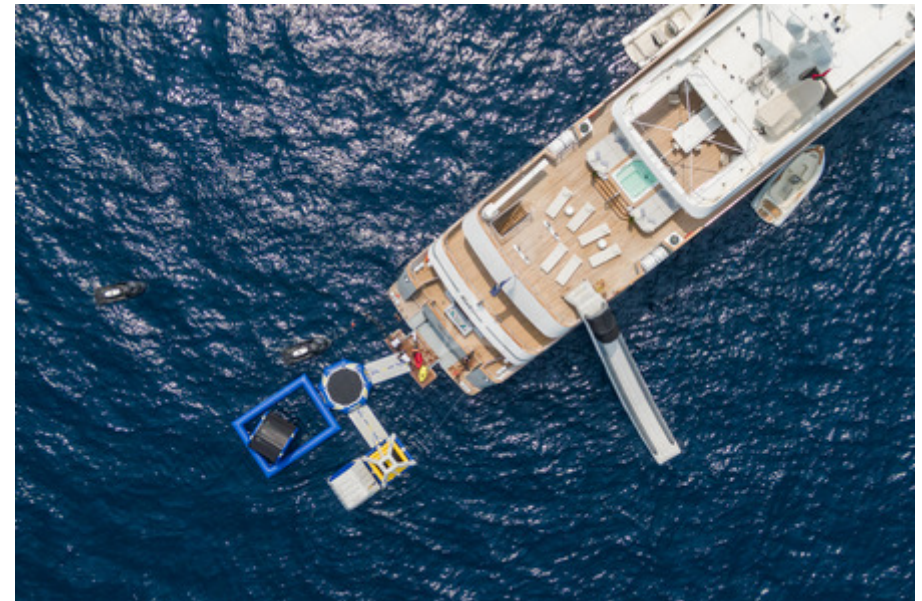
Aft view



View from above day



View from above night



View from above playground



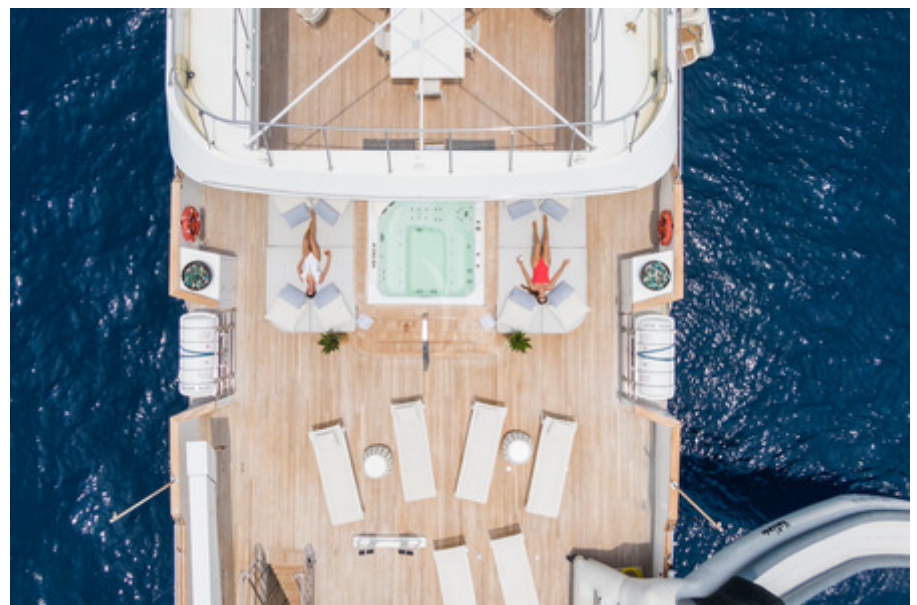
Inflatable playground



Decks



Decks



Sundeck from above



Sundeck



Jacuzzi on sundeck



Jacuzzi



Jacuzzi



Jacuzzi at sunset



Sun beds on sundeck



Sundeck dining



Sundeck dining



Sundeck dining



Sundeck bar



Sundeck evening dining



Sundeck evening dining



Evening on the sun deck



Upper deck aft



Upper deck aft



Main deck aft



Main deck saloon



Main deck saloon



Main deck saloon



Main deck saloon and bar



Main deck bar



Main deck saloon



Main deck dining



Main deck dining



Main deck whiskey bar



Main deck whiskey bar



Main deck whiskey bar



Main deck gym



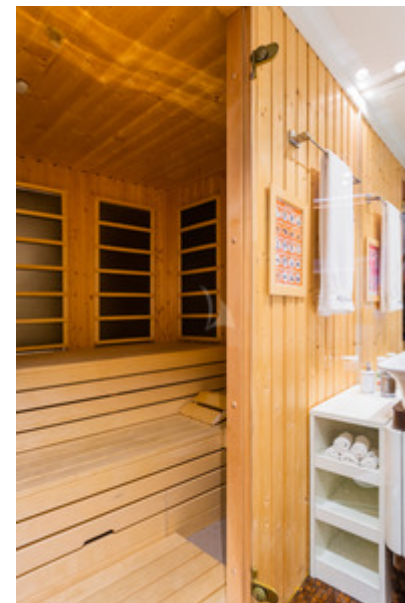
Main deck gym



Main deck therapy suite



Main deck therapy suite



Main deck sauna



Main deck day heads



Gaming room



Elevator to all floors



Stairway



Master stateroom



Master stateroom



Master stateroom



Master stateroom desk



Master stateroom desk



Master stateroom en suite



Master stateroom en suite



Guest VIP stateroom



Guest VIP stateroom



Guest VIP stateroom en suite



Guest VIP stateroom



Guest VIP stateroom



Guest VIP stateroom



Guest VIP stateroom



Guest VIP stateroom en suite



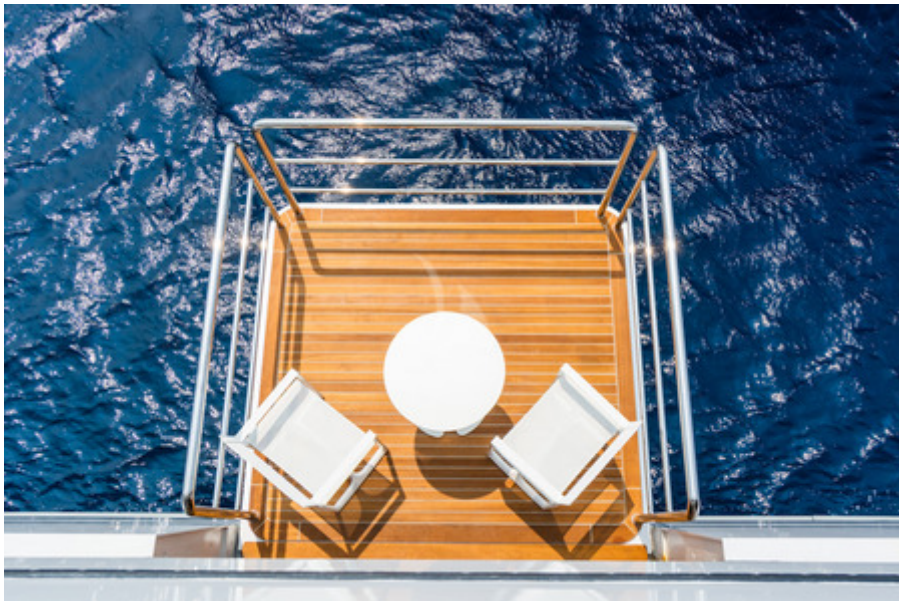
Guest VIP stateroom



Guest VIP stateroom



Guest VIP stateroom balcony



Guest VIP stateroom balcony



Guest VIP stateroom balcony



Beach setup



Beach setup



Beach setup



Water toys



Water toys



Water toys



Water toys



Water toys



Water toys



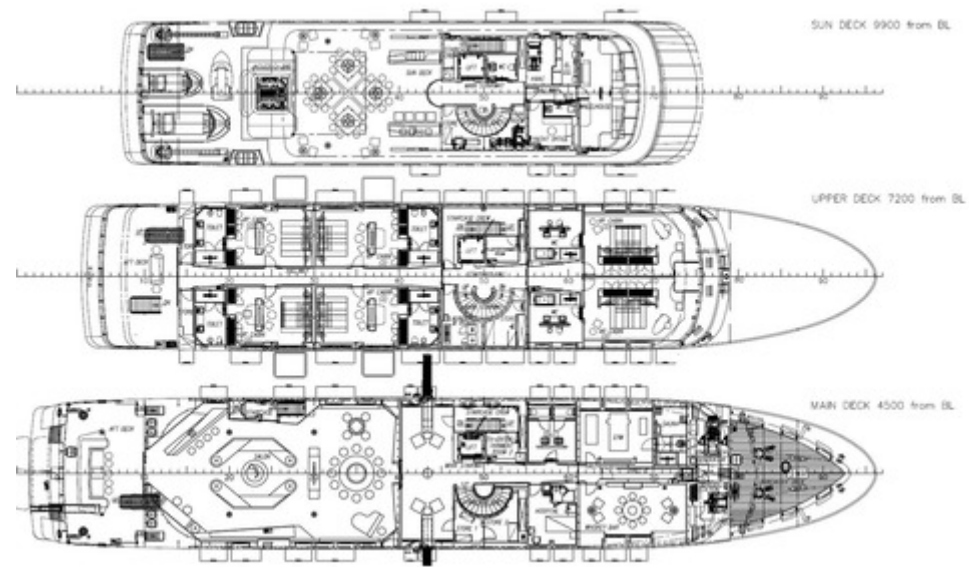
Water toys



Water toys



Water toys



Layout

SPECIFICATIONS

ACCOMMODATION

Number of Guests: 12

Number of Cabins: 6

Cabin Configuration: 6 Convertible

Bed Configuration: 6 King

EQUIPMENT

Engines: Main Engines: 2 x Cummins KTA 38-M2 1007 kW

Generators: 3 x Cummins QSM 11 248 kW

Cruising Speed: 12 knots

Fuel Consumption: 375 Litres/Hr

WATERSPORTS

Tenders + Toys: 2017 Seascan Marine tender (6.25m) with 240 hp, capacity for 12 guests and 2 crew

2 x 3-seater, Sea-Doo waverunners

2 x Seabob F5

4 x Sea-Doo RS1 underwater propulsion units

Inflatable extendable deck, slide and playground

Zapata racing jet pack, flyboard and racing hoverboard

Large selection of inflatable towable toys (including tubes and rings)

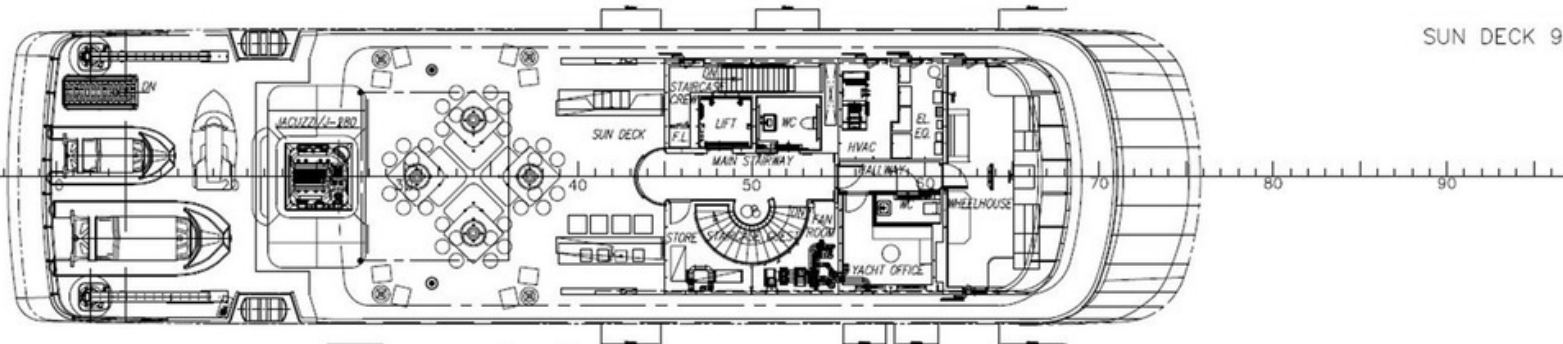
2 x kayaks

2 x windsurfers

Water-skis, wakeboards and paddleboards

Snorkelling equipment and large selection of fishing equipment.

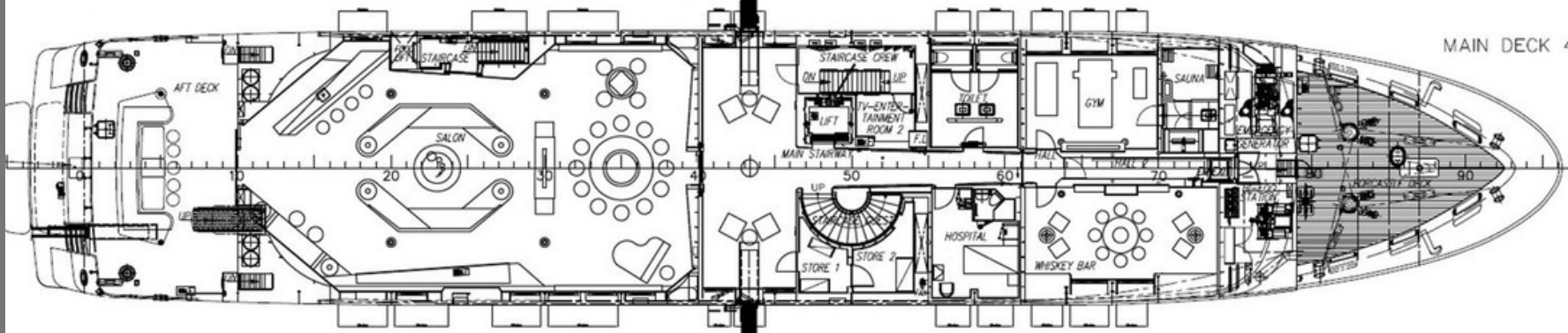
LAYOUT



SUN DECK 9900 from BL



UPPER DECK 7200 from BL



MAIN DECK 4500 from BL

Disclaimer

This document is not contractual. All specifications are given in good faith and offered for informational purposes only. The publisher and company do not warrant or assume any legal liability or responsibility for the accuracy, completeness, or usefulness of any information and/or images displayed. Yacht inventory, specifications and charter prices are subject to change without prior notice. None of the text and/or images used in this brochure may be reproduced without written consent from the publisher.