



# LIGHT HOLIC

**Length:** 60.00 metres (196' 10")

**Beam:** 10.00 metres (32' 10")

**Draft:** 3.0 metres (9' 10")

**Number of Guests:** 12

**Number of Crew:** 15

**Built:** 2011

**Refit:** 2020

**Builder:** CRN Ancona

**Naval Architect:** Zuccon International

**Flag:** British Virgin Islands

**Hull Construction:** Steel

Air conditioning, Deck Jacuzzi, Gym/exercise equipment,  
Stabilisers at anchor, Stabilisers underway

---

The 196.85ft /60m CRN 60 motor yacht LIGHT HOLIC was built in 2011 by CRN and last refitted in 2014. Previously named Darlings Danama her luxurious interior is designed by Negoescu and her exterior styling is by Zuccon.

Accommodation Light Holic's interior layout sleeps up to 12 guests in 6 rooms, including a master suite, 5 double cabins and 1 twin cabin. She is also capable of carrying up to 15 crew onboard to ensure a relaxed luxury yacht experience. Timeless styling, beautiful furnishings and sumptuous seating feature throughout to create an elegant and comfortable atmosphere. Light Holic's impressive leisure and entertainment facilities

make her the ideal charter yacht for socialising and entertaining with family and friends. Performance She is built with Steel hull and Aluminium superstructure. This semi custom CRN 60 displacement yacht also features 'at anchor stabilisers' which work at zero speed, increasing onboard comfort at anchor and on rough waters. With a cruising speed of 14 knots, a maximum speed of 15 knots and a range of 3,000nm from her 117,000litre fuel tanks, she is the perfect combination of performance and luxury.





LIGHT HOLIC EXTERNAL SITTING AREA



LIGHT HOLIC JACUZZI



LIGHT HOLIC EXTERNAL DINING AREA



LIGHT HOLIC TWIN CABIN



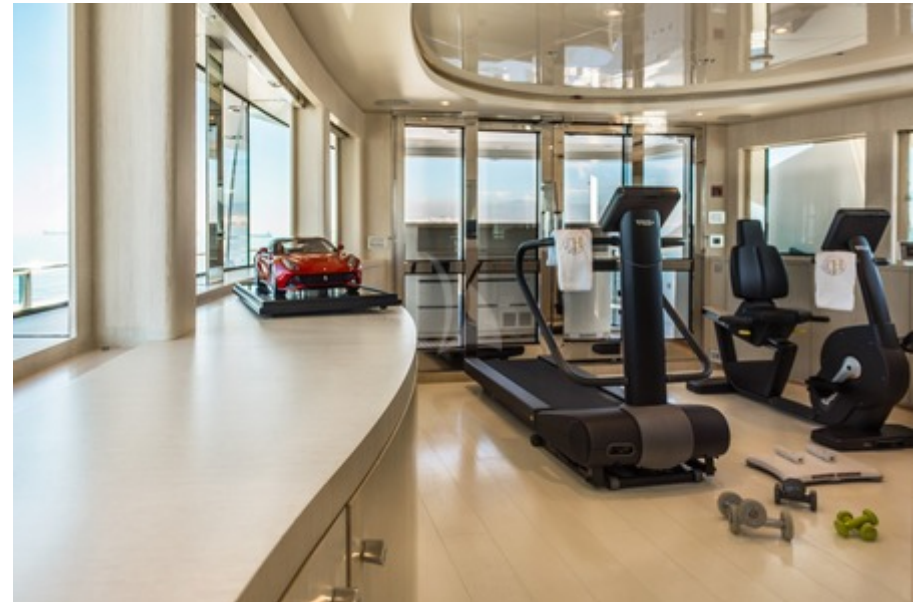
LIGHT HOLIC MASTER BEDROOM BATHROOM



LIGHT HOLIC GUEST CABIN



LIGHT HOLIC DINING AREA



LIGHT HOLIC GYM

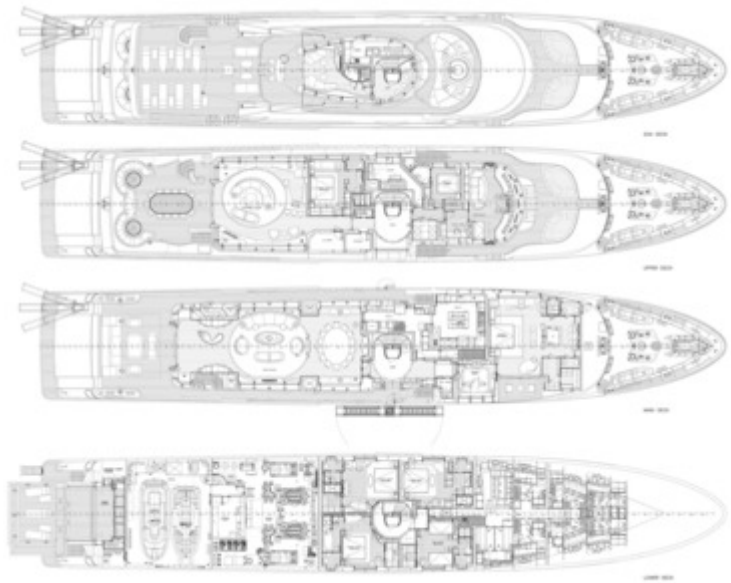




LIGHT HOLIC BEACH PLATFORM



LIGHT HOLIC SEA VIEW



LIGHT HOLIC GA



LIGHT HOLIC JACUZZI



LIGHT HOLIC EXTERNAL SITTING AREA



LIGHT HOLIC MASTER BEDROOM



LIGHT HOLIC MASTER BEDROOM



LIGHT HOLIC GUEST CABIN



# SPECIFICATIONS

## ACCOMMODATION

**Number of Guests:** 12

**Number of Cabins:** 6

**Cabin Configuration:** 5 Double, 1 Twin

## EQUIPMENT

**Engines:** 2 x 1500 hp Caterpillar 3512B-B

2 x CAT C9-175kW

1 x CAT C4-75kW (night gen.)

**Cruising Speed:** 14 knots

**Fuel Consumption:** Main Engines 490 Ltr/Hr + Gens 950 Ltr/Day Litres/Hr

## WATERSPORTS

**Tenders + Toys:** —2 x Castoldi Jet 315hp, Tenders

—2 x Sea-doo 155 GTX, Jet Skis

—2 x Seabob F5 S

—1 x Flyboard Pro Series X-Armor & Accessories

—1 x Fishblade 2000

—1 x Towables - banana

—1 x Towables - 4G tube (4 seat sofa)

—1 x Towables - Jobe Rumble

(1 person tube)

—1 x Towables - Sunset (3 person tube)

—1 x Towables - Biscuit (1 person)

—8 x Combo Skis & accessories

—2 x Wakeboards & Accessories (1 for kids)

—1 x Kneeboard

—1 x Wakesurf

—2 x SUPs (1 inflatable)

—2 x Noodles

—1 x Waterslide + accessories 6m

—1 x Trampoline 3,7m

—2 x Spearguns

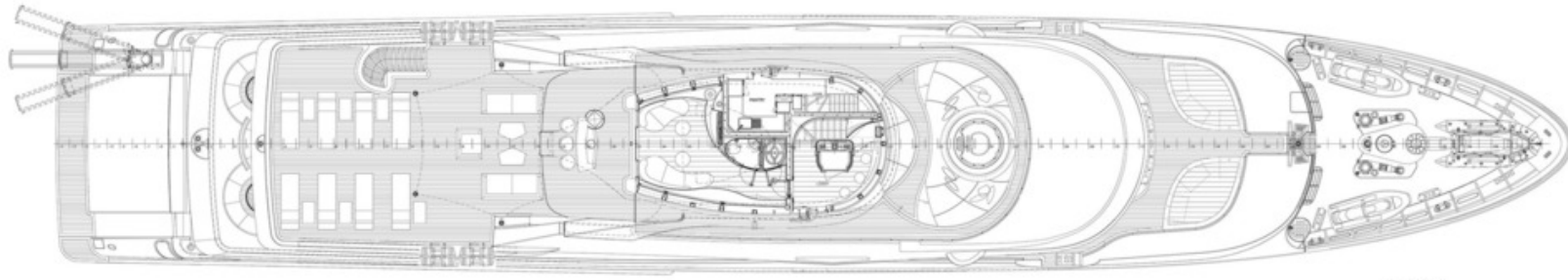
—Snorkeling Equipment

—6 x Scuba Equipment (adults)

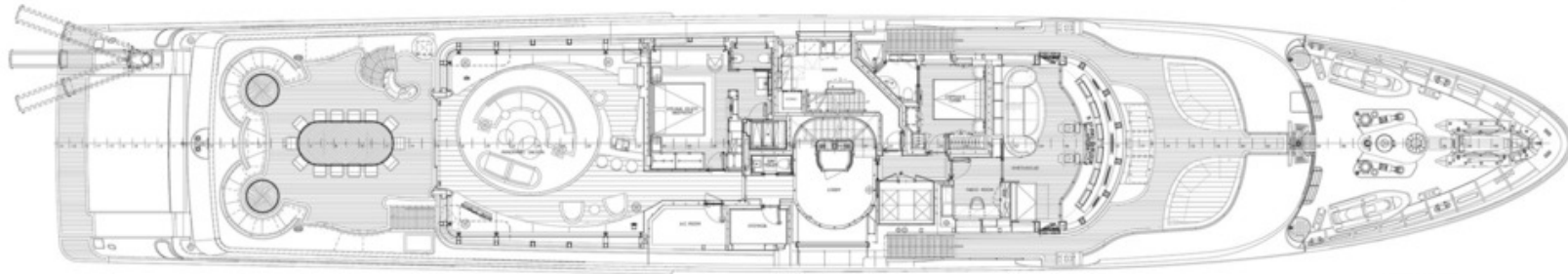
—3 x Scuba Equipment (children)

—Fishing Gear & Accessories

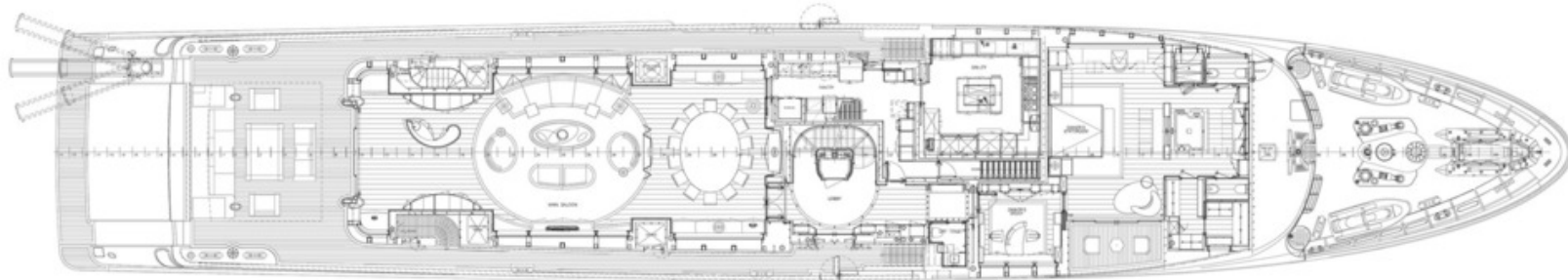
# LAYOUT



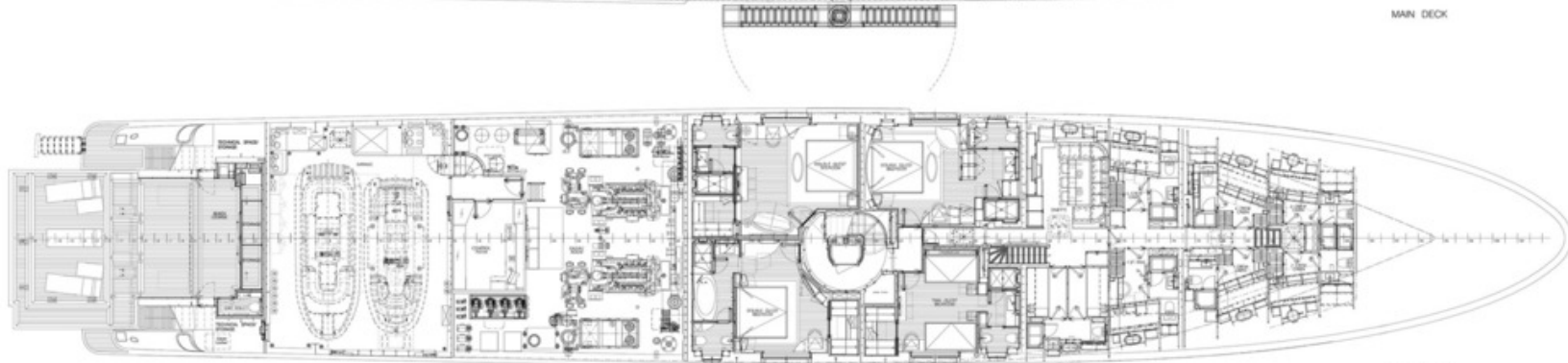
SUN DECK



UPPER DECK



MAIN DECK



LOWER DECK



## **Disclaimer**

This document is not contractual. All specifications are given in good faith and offered for informational purposes only. The publisher and company do not warrant or assume any legal liability or responsibility for the accuracy, completeness, or usefulness of any information and/or images displayed. Yacht inventory, specifications and charter prices are subject to change without prior notice. None of the text and/or images used in this brochure may be reproduced without written consent from the publisher.