



NEW HORIZONS 2

Length: 15.20 metres (49' 10")

Beam: 7.98 metres (26' 2")

Draft: 1.25 metres (4' 1")

Rig: Sloop

Number of Guests: 11

Number of Crew: 3

Built: 2016

Refit: 2017

Builder: Fountaine Pajot

Flag: Greek

Hull construction: GRP

Hull configuration: Multi hull

Greek charter licence, Air conditioning, WiFi connection on board

enjoy dining outdoors all together.

Further, she has a foredeck and an upper deck salon both protected with sun awnings and numerous sunbeds to enjoy the sun when desired.

New horizons 2 is equipped with a powerful Highfield 3.80m tender to offer all kinds of watersports : adult and child water skiing, wakeboard, 3 tubes, 2 paddleboards, snorkeling equipment.

The ideal vessel to fulfil your dream holiday.

This yacht has been customised to have the capacity to accommodate up to 11 guests in 1 master, 2 queen, 1 triple and 1 double cabin, all with ensuite bathrooms. Crew of 3 in separate cabins with own bathroom. The yacht is fully air-conditioned, and equipped with 5* amenities.

This stylishly uplifted catamaran will conquer a place in your heart and memories.

With amazing space both indoors and outdoors, she is designed in order to provide comfort and luxury. The yacht can accommodate 12 in her cockpit table, allowing her guests to

KEY FEATURES

- 1** Now BLUE Exterior
- 2** Outdoor dining table seats 12 guests
- 3** Karl Lagerfeld Towels / Nef Nef Beach Towels / Egyptian Cotton Sheets
- 4** Cristofle Silverware
- 5** Sun awning in both upper and foredeck areas



Aft Deck



Breakfast Lifestyle



Forward Area



Upper Deck



Interior Salon and Dining



Master Cabin



Ensuite



Sunset Lifestyle



Aft-Deck Dining



Cuisine



Cuisine



Snacks on Board

SPECIFICATIONS

ACCOMMODATION

10-11 Guests in 5 cabins:

one master cabin, three queen cabins and one triple
(Queen size beds in all cabins)

All cabins are beautifully decorated and include
Egyptian cotton sheets, fan, aircondition, Karl Lagerfeld
towels, toiletries, slippers/robes and en suite facilities
with plexiglass shower stalls.

EQUIPMENT

Engines: Main Engines 2 x 75hp Yanmar

Generator 11KW Onan (2.5ltrs p/hr)

Cruising speed: 8.5

Fuel consumption: 13 Litres/Hr

Ice maker (capacity 12kg/day)

WATERSPORTS

Tender & Toys:

3.80m Highfield tender (driven by crew only) with 30hp

Mercury outboard

1 Yamaha RDS250 sea scooters (2019)

Water ski (adult and children)

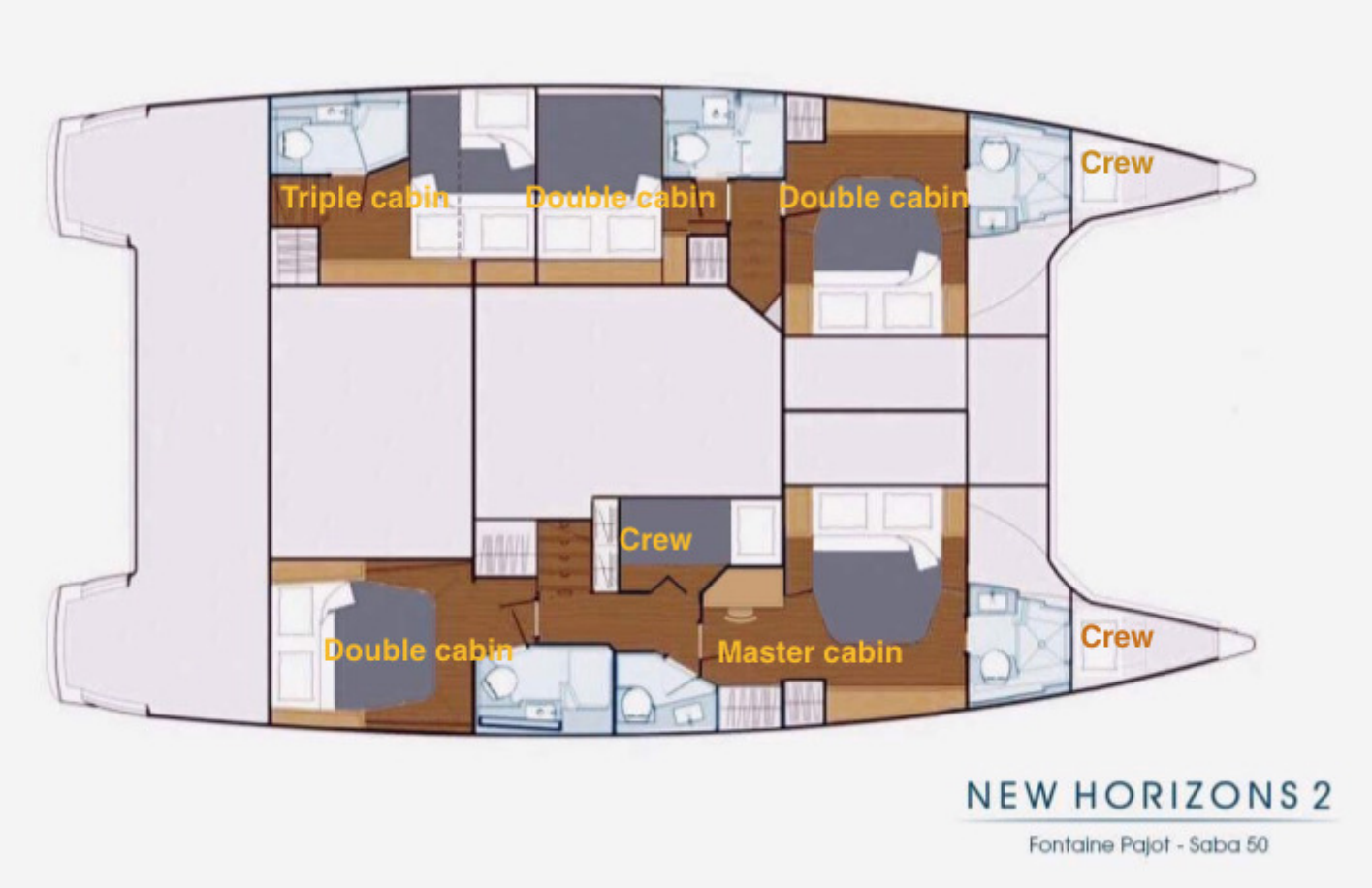
Wakeboard

2 Tubes

2 Inflatable SUP

Snorkeling gear

LAYOUT



Disclaimer

This document is not contractual. All specifications are given in good faith and offered for informational purposes only. The publisher and company do not warrant or assume any legal liability or responsibility for the accuracy, completeness, or usefulness of any information and/or images displayed. Yacht inventory, specifications and charter prices are subject to change without prior notice. None of the text and/or images used in this brochure may be reproduced without written consent from the publisher.