



PREFERENCE 19

Length: 36.40 metres (119' 5")

Beam: 7.20 metres (23' 7")

Draft: 2.2 metres (7' 3")

Number of Guests: 10

Number of Crew: 7

Built: 2011

Builder: Tansu

Flag: Maltese

Hull Construction: Steel

Hull Configuration: Displacement

Air conditioning, Approved RYA water sports centre, Gym/exercise equipment, Stabilisers at anchor, Stabilisers underway, WiFi connection on board

PREFERENCE 19's striking exterior and elegant interior design are the work of Tansu Yachts. Bold styling, beautiful furnishings and sumptuous seating throughout create a relaxed feeling that echoes a beach club on board. Her extensive deck spaces are a match for any 50m yacht, whilst her size allows entry into secluded anchorages that larger yachts could not access.

Guests can enjoy a fitness-fuelled charter with her unrivalled selection of gym equipment and get their adrenalin fix on her numerous water toys. With a yoga deck, basketball court, circuit training area and marine golf kit (featuring fish-food golf

balls) she is no ordinary charter yacht.

PREFERENCE 19 can accommodate up to ten guests in five relaxing staterooms, including a full-beam master stateroom on the main deck, along with a further two double staterooms and two twin staterooms on the lower decks, all with an ensuite.

The yacht comes with an incredible selection of tenders, toys and exercise equipment including a 6.5m tender, two Waverunners, two Seabobs, multiple towable toys and a variety of exercise equipment. There is also a personal trainer on board.

KEY FEATURES

- 1** Resonates beach club vibes with expansive deck space and ample relaxing lounge areas
- 2** Jam-packed full of gym equipment including a basketball hoop, yoga mats, free weights and punch bag
- 3** Guests can play golf off the swim platform with a golf mat, clubs and fish food golf balls
- 4** Extensive list of water-sports toys, including 2 x waverunners and 2 x Seabobs, and a Nautibuoy inflatable platform
- 5** Led by a long-standing Captain James and his family-like crew, including a deckhand-come-personal trainer
- 6** 6.5m tender which takes 12 guests



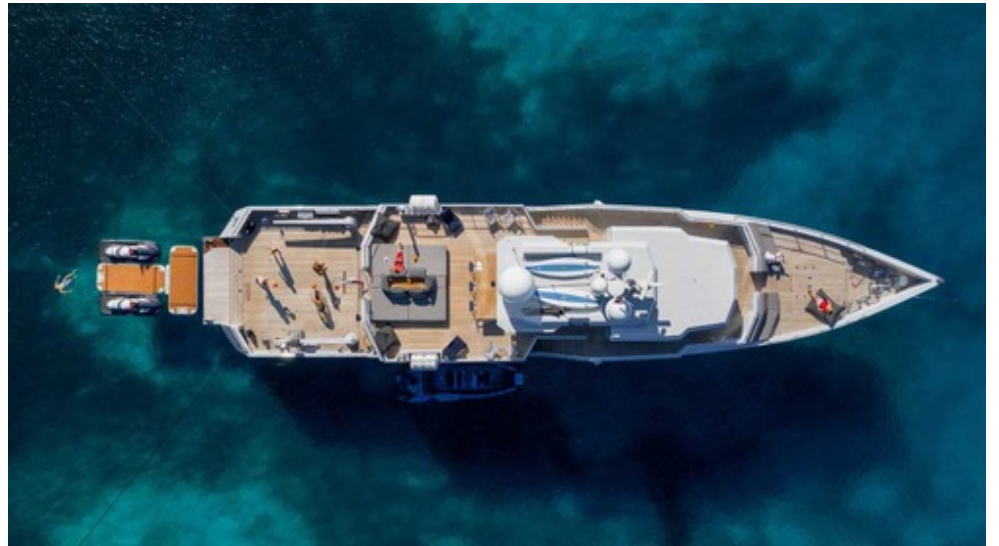
Beach club set up



Beach club set up



Aerial



Aerial



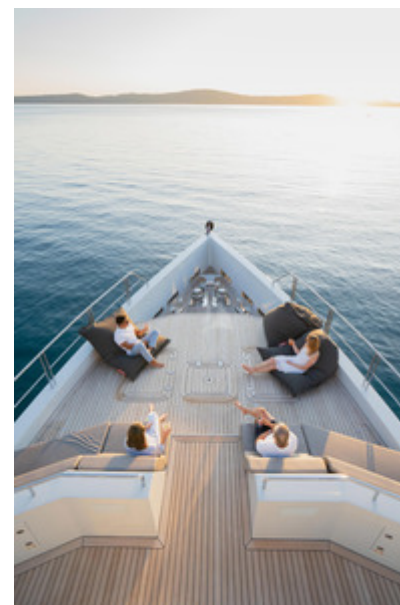
Aft deck circuit training set up



Aft deck



Upper deck



Foredeck / yoga platform



Upper deck



Main aft deck



Main salon



Master cabin



Gym set up



Gym equipment



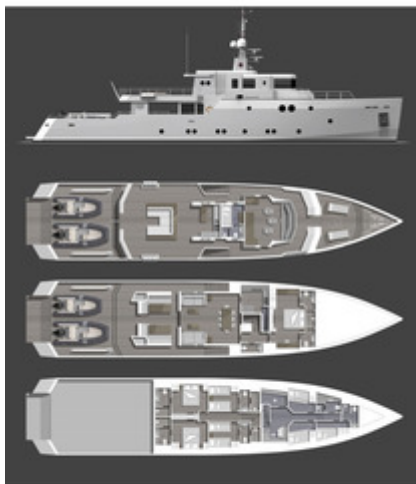
Al fresco dining



Al fresco dining



GoCycles



Main salon



Main salon



Main salon



Golf mat with fish food golf balls



Yoga on the bow



Main aft deck



Upper aft deck dining



Upper aft deck sunpads



Upper aft deck dining



Yoga on the bow



Yoga on the bow



Main aft deck

SPECIFICATIONS

ACCOMMODATION

Number of Guests: 10

Number of Cabins: 5

Cabin Configuration: 3 Double, 2 Twin

Bed Configuration: 1 Queen, 2 Double, 4 Single

EQUIPMENT

Engines: 2 x Caterpillar C32 / 1940 hp

Generators: 2 x Northern Lights 50 kW

Cruising Speed: 11.5 knots

Fuel Consumption: 260 Litres/Hr

WATERSPORTS

Tenders + Toys: Gala Viking V650 (6.5m) tender with Yamaha 175HP (seats 12)

2 x Yamaha VX Cruiser waverunners

2 x Seabob F5

2 x GoCyles (available upon request)

2 x Nautibuoy (inflatable platform / waverunner dock)

Water skis (adult and junior)

Wakeboards

2 x inflatable paddle boards

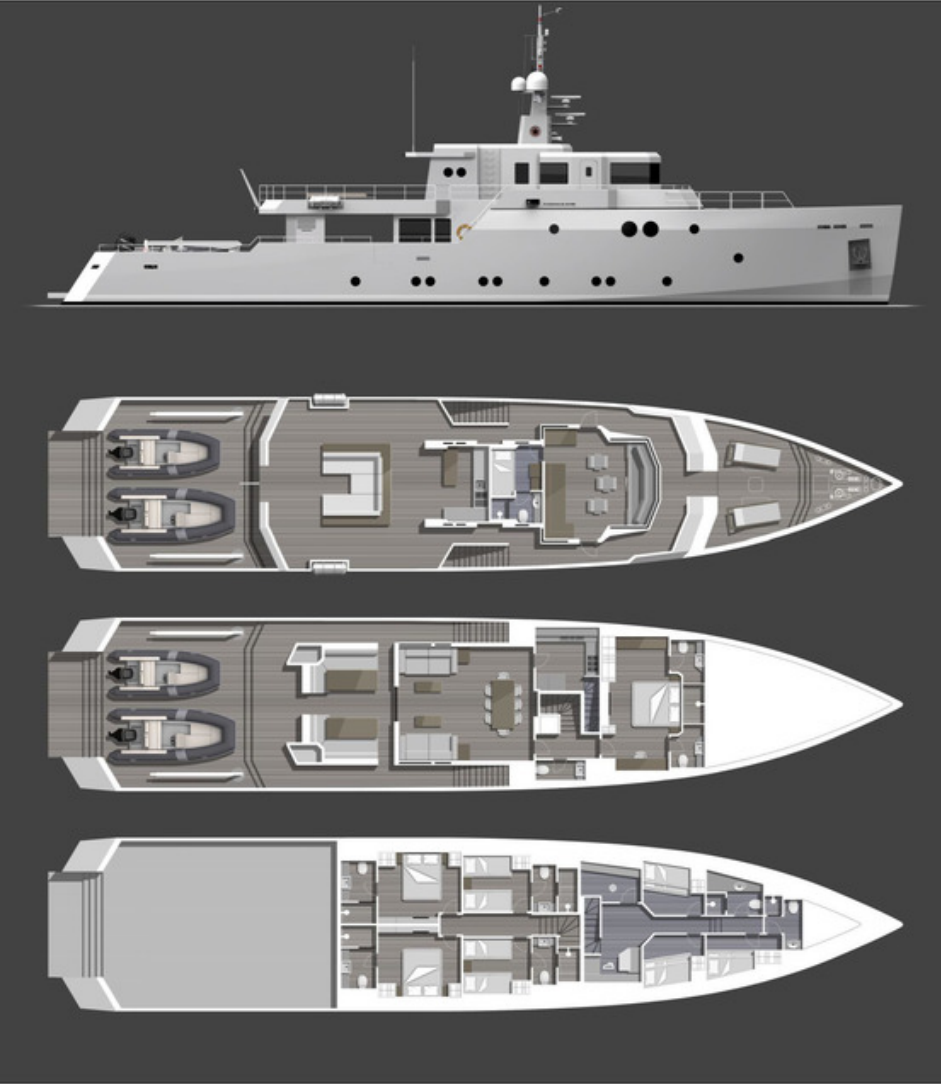
Inflatable towable toys (donuts etc)

Golf mat, clubs & fish food golf balls

Snorkelling equipment

Fishing equipment

LAYOUT



Disclaimer

This document is not contractual. All specifications are given in good faith and offered for informational purposes only. The publisher and company do not warrant or assume any legal liability or responsibility for the accuracy, completeness, or usefulness of any information and/or images displayed. Yacht inventory, specifications and charter prices are subject to change without prior notice. None of the text and/or images used in this brochure may be reproduced without written consent from the publisher.