





# SPICE OF LIFE

**Length:** 31.00 metres (101' 8")

**Beam:** 7.30 metres (23' 11")

**Draft:** 2.5 metres (8' 2")

**Number of Guests:** 12

**Number of Crew:** 5

**Built:** 1994

**Refit:** 2020

**Builder:** AEGEAN BUILDERS

**Naval Architect:** Antonis Ploutis

**Flag:** Maltese

**Hull Construction:** Steel

**Hull Configuration:** Planing hull

Air conditioning, WiFi connection on board

---

M/Y SPICE OF LIFE (ex Evidence) is an elegant custom yacht built by Aegean Builders in 1995 and refitted in 2020.

Her 31m and wide beam harbors 5 ensuite cabins able to accommodate 12 guests in 9 full size beds for a comfortable familial cruise along the coastline.

Her large food storage capacity allows the guests to stay at anchor away from the crowds for an extended period of time if desired.

The low fuel consumption gives her an extended range to easily travel to Corsica or Sardinia at reasonable costs.

SPICE OF LIFE professional and experimented crew will answer all the needs of the guests, and their knowledge of the areas travelled can bring them from the hustle of Saint Tropez or Cannes to the most calm and secluded beaches of Corsica.

The newly refitted saloon features:

a large TV LG Led 65' plus a Bose Sound Bar 700 system and a Playstation PS4

a large sofa, a wine cellar and a brand new extendable dinning table.

The saloon can be an ideal open space for corporate charter offering companies to organise large meetings or seated lunches,

On a daily basis she is the perfect yacht for your friends and/or family getaway, corporate events or conference.

Going out for a wedding, a birthday party or even to have fun! Enjoy the best moments onboard SPICE OF LIFE, chilling, enjoying the chef's culinary art, swimming or doing water sports.

Large aft deck, very spacious flybridge and bow area makes

# KEY FEATURES

- 1** 12 GUESTS IN 5 CABINS
- 2** LICENCE TO CRUISE WITH UP TO 32 GUESTS
- 3** GUESTS ORIENTED INTERNATIONAL CREW
- 4** SPACIOUS OUTDOOR AREAS
- 5** LOW CONSUMPTION
- 6** OPEN TO STATIC CHARTERS



Salon



Salon



Salon



Salon



Salon



Corridor





Master





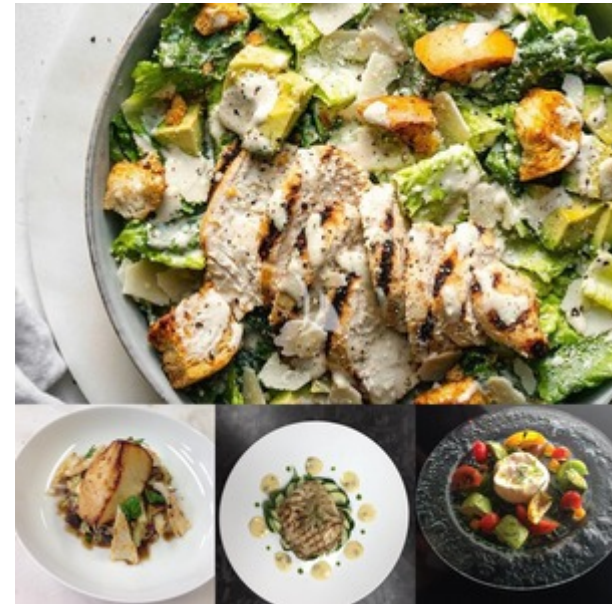




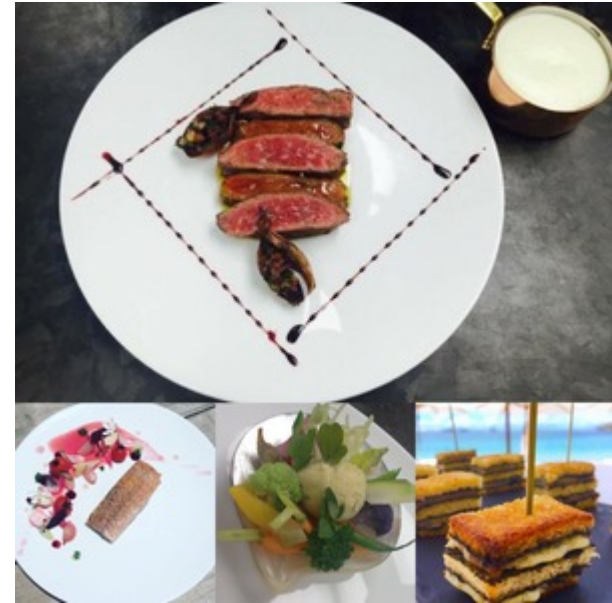






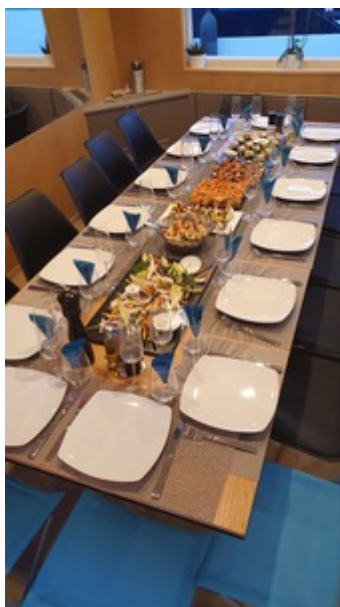




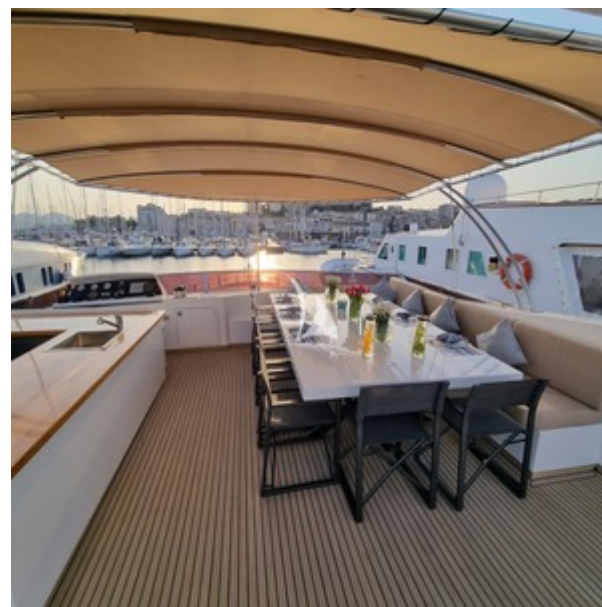




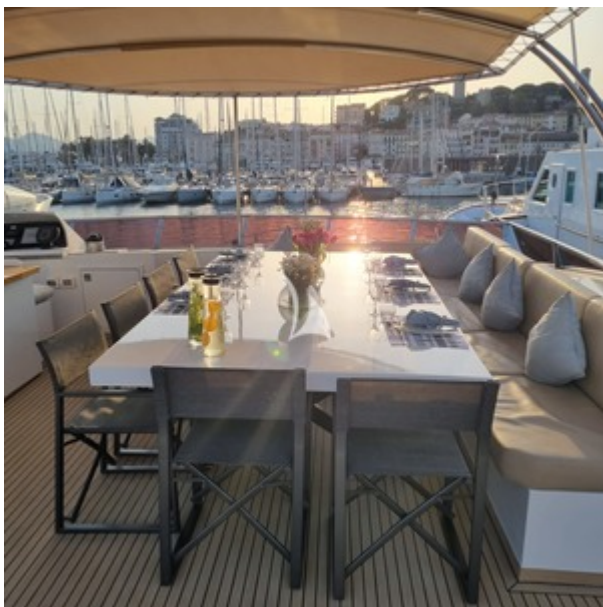




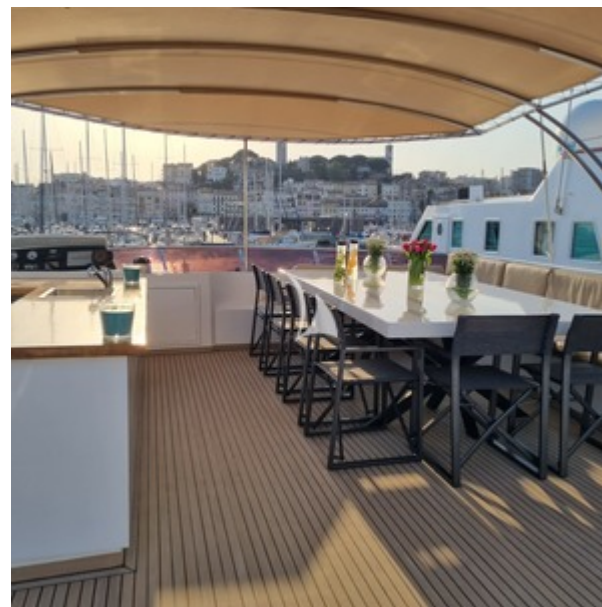
+ 12 table



Brand new flybridge



Brand new flybridge



Brand new flybridge

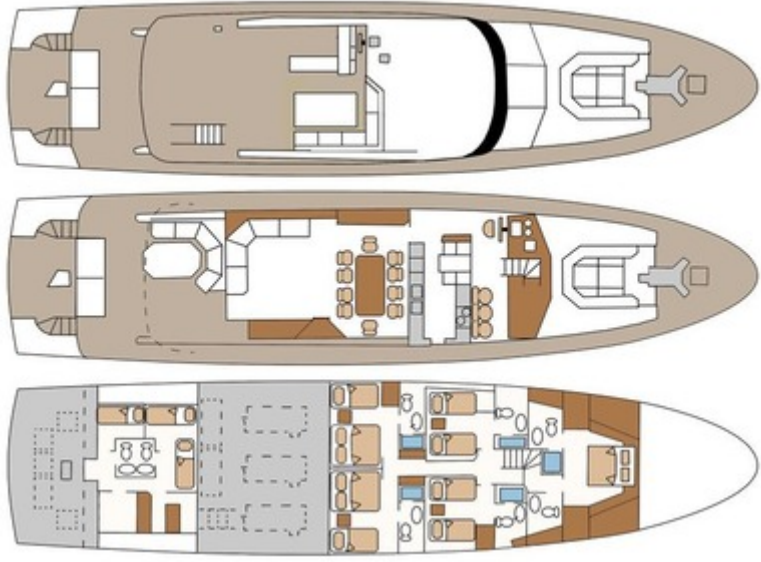


Brand new flybridge











# SPECIFICATIONS

## ACCOMMODATION

**Number of Guests:** 12

**Number of Cabins:** 5

**Cabin Configuration:** 3 Double, 2 Twin

**Bed Configuration:** 3 Double, 6 Single

## EQUIPMENT

**Engines:** Engines 3 X Detroit Diesel - 16V 92TA - 1450 HP

2 X Perkins 35 Kw

**Cruising Speed:** 12 knots

**Fuel Consumption:** 250 Litres/Hr

## WATERSPORTS

**Tenders + Toys:** 1x Tender Zodiac OPEN PRO 650 + Mercury 150HP Engine (Towing pole, Cool Box, 7 seats, Swimming ladder, Bluetooth sound system)

1 x Seabob (2020)

1 x Yamaha Seawings 2

1 x Efoil

1 x Tender 6m

2 x pairs of water skis

2 x wake board

1 x Banana

3 x Paddles

Various inflatables

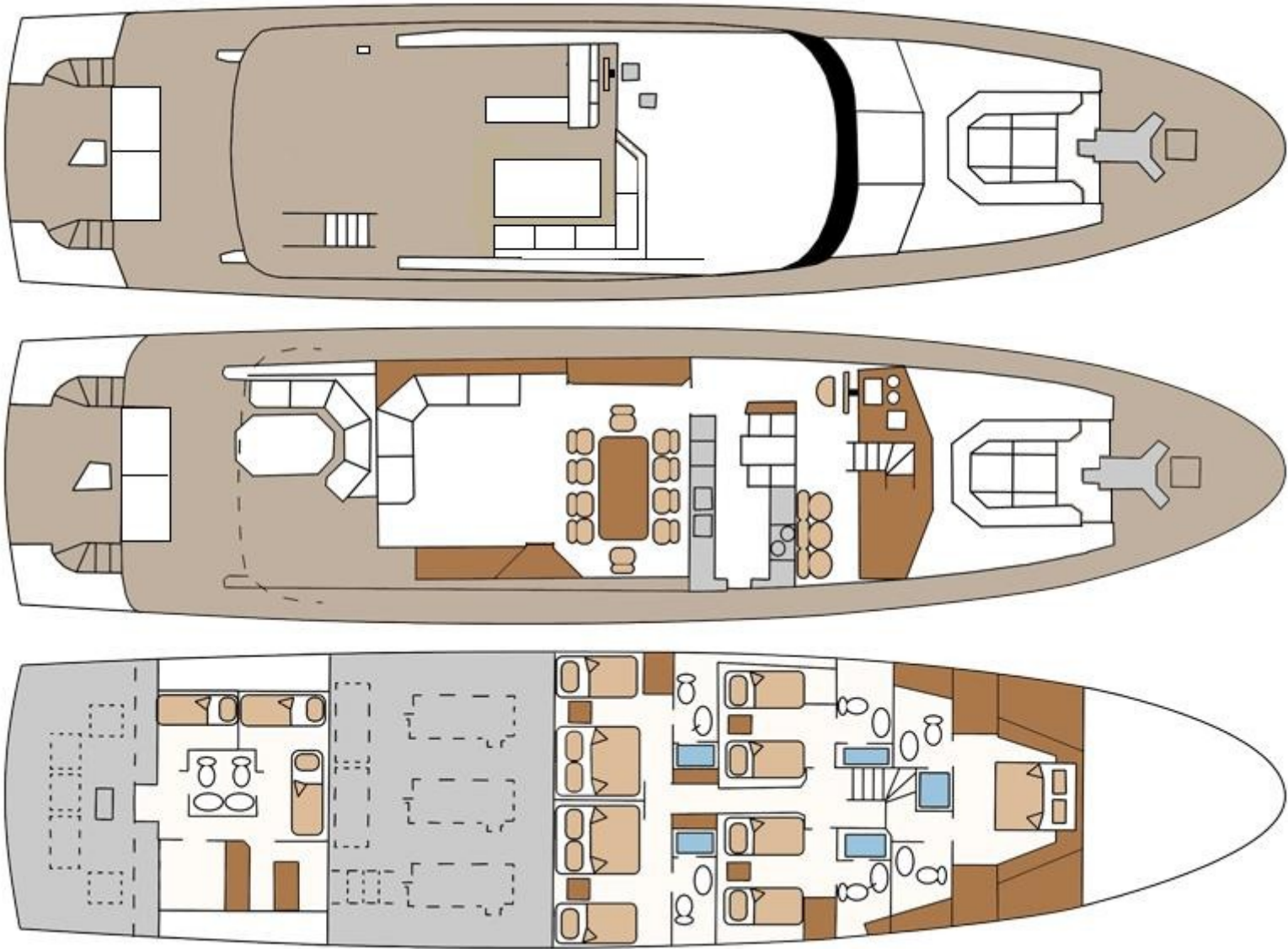
Various towables

Snorkeling Equipment

Fishing Equipment

Can navigate at 8 to 10 knots for fishing

LAYOUT





## **Disclaimer**

This document is not contractual. All specifications are given in good faith and offered for informational purposes only. The publisher and company do not warrant or assume any legal liability or responsibility for the accuracy, completeness, or usefulness of any information and/or images displayed. Yacht inventory, specifications and charter prices are subject to change without prior notice. None of the text and/or images used in this brochure may be reproduced without written consent from the publisher.