



SUMMER FUN

Length: 30.80 metres (101' 1")

Beam: 7.10 metres (23' 4")

Draft: 2.30 metres (7' 7")

Number of Guests: 12

Number of Crew: 7

Built: 2001

Refit: 2021

Builder: Admiral

Naval Architect: Cantieri Navali Lavagna

Flag: Greek

Hull Construction: Aluminium

Hull Configuration: Semi displacement

Retractable awning on Flybridge (covers 4/5 of the flybridge basically all the space apart from where the Captain is), Air conditioning, Stabilisers at anchor, Stabilisers underway, WiFi connection on board

Summer Fun is a stunning 30.80 metre motor yacht built in 2001 by Admiral Yachts yet fully refitted in 2021. Her interior is sleek and modern with a neutral colour scheme running throughout the vessel, giving a calming and elegant vibe. She sleeps up to 12 guests in 6 finely decorated rooms, including one Master Suite, 1 VIP on the Main Deck that converts into a Playroom, 4 Twin cabins, 2 of which convert into Double all with en suite facilities and a/c. She is also capable of carrying up to 7 crew members on board to ensure a relaxed luxury

yacht experience. Summer Fun's timeless styling along with her impressive leisure and entertainment facilities such as a wide collection of water toys make her the ideal charter yacht for socializing and entertaining with family and friends.

KEY FEATURES

- 1** Stabilizers underway & zerospeed
- 2** Spacious accommodation for up to 12 guests in 6 cabin layout
- 3** Playroom on main deck convertible into VIP Cabin
- 4** Refit 2021



Cruising



Cruising



Aerial



Saloon



Saloon TV



Saloon Details



Saloon



Saloon



Dining Area



Dining Table



Details of Dining



Table setting



Details



TV Room



Stairway to Lower Deck



Master Cabin



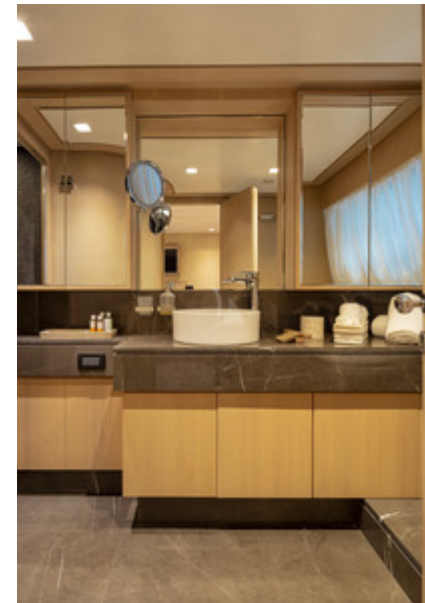
Master Cabin



Details



Master Bathroom



Master WC



VIP on Main Deck



VIP on Main Deck



VIP Bathroom



Double Cabin



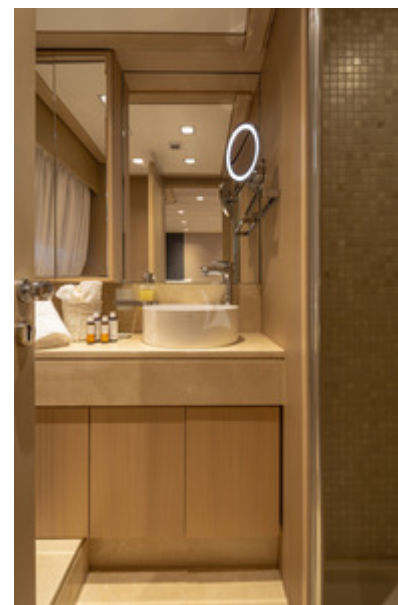
Double Cabin



Double Cabin



Double Cabin



Guest Cabin WC



Twin Cabin



Twin Cabin



Guest Cabin WC



Fore deck Sunbathing Area



Aerial



Aft Deck Dining Area



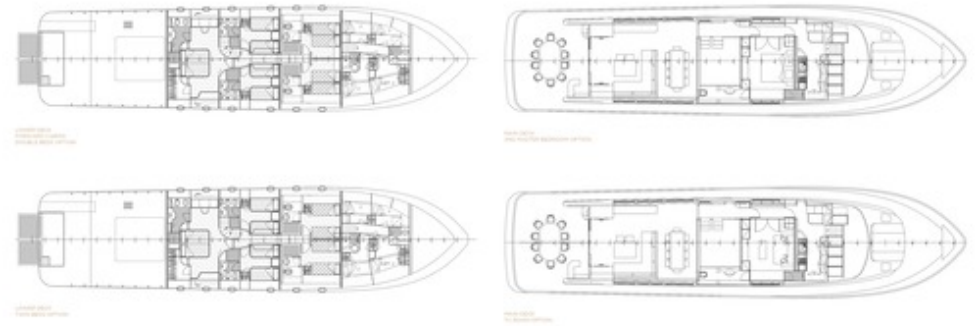
Aft Deck dining Area



Sun Deck



Sun Deck



General Arrangement

SPECIFICATIONS

ACCOMMODATION

Number of Guests: 12

Number of Cabins: 6

Cabin Configuration: 4 Twin, 2 Convertible

Bed Configuration: 1 King, 1 Queen, 4 single (2 of them convert to double), 1 Pullman,

EQUIPMENT

Engines: Engines: 2x MTU 1680KW /2000 RPM

Generators: 2x 33kW Kohler

1x 23kW Kohler night generator

Generators' consumption: 200 ltrs/day

Cruising Speed: 23 knots

Fuel Consumption: 600 Litres/Hr

WATERSPORTS

Tenders + Toys: Tender sport 4.95m with a 70Hp OB

Jet Ski 2 seater YAMAHA 270hp

Seabob

Banana

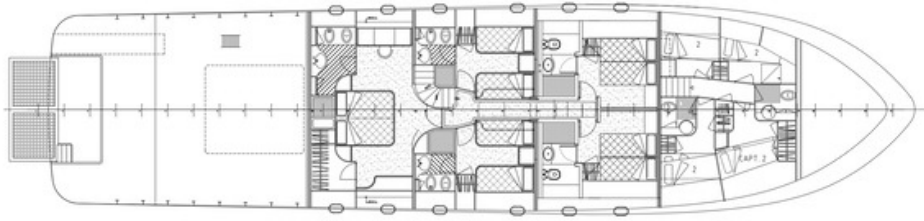
Tubes

Water skis for adults and children

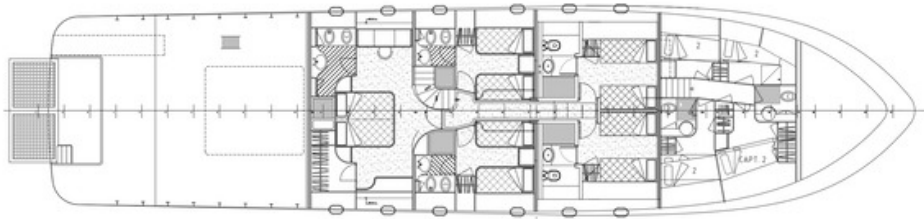
Snorkeling gear

SUP

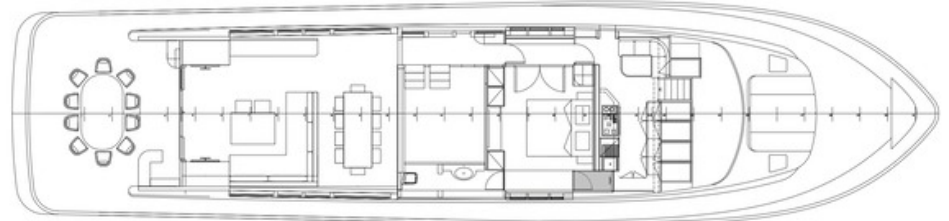
LAYOUT



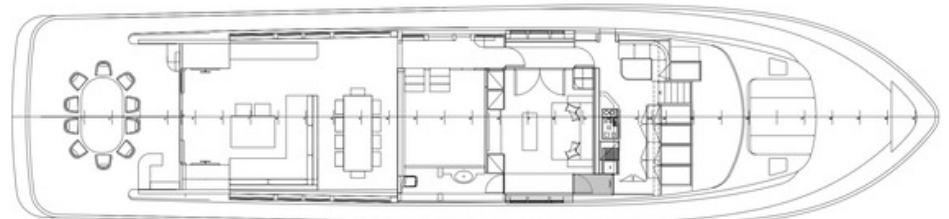
LOWER DECK
FORWARD CABINS
DOUBLE BEDS OPTION



LOWER DECK
TWIN BEDS OPTION



MAIN DECK
2ND MASTER BEDROOM OPTION



MAIN DECK
TV ROOM OPTION

Disclaimer

This document is not contractual. All specifications are given in good faith and offered for informational purposes only. The publisher and company do not warrant or assume any legal liability or responsibility for the accuracy, completeness, or usefulness of any information and/or images displayed. Yacht inventory, specifications and charter prices are subject to change without prior notice. None of the text and/or images used in this brochure may be reproduced without written consent from the publisher.