



THE WELLESLEY

Length: 56.20 metres (184' 5")

Beam: 9.10 metres (29' 10")

Draft: 3.1 metres (10' 2")

Number of Guests: 12

Number of Crew: 12

Built: 1993

Refit: 2016

Builder: Oceanco

Naval Architect: Donald Starkey

Flag: Maltese

Hull Construction: Steel

Hull Configuration: Displacement

Air conditioning, Approved RYA water sports centre, Deck Jacuzzi, Gym/exercise equipment, Stabilisers at anchor, Stabilisers underway, WiFi connection on board

The Wellesley, London's finest boutique-grand hotel in Knightsbridge, presents you 6 suites onboard the 56m superyacht, The Wellesley. Mirroring the hotel's art-deco design, and set against a constantly changing backdrop, guests are invited to experience the same exceptional personal service, fine dining and attention to detail that has become synonymous with the hotel, on board a private superyacht. The Wellesley was originally built in the Netherlands by Oceanco in 1993, and underwent a

comprehensive rebuild / refit by Sunrise Yachts in 2016. Interior designer Dennis Irvine, of Dennis Irvine Studios, was also responsible for the 1920s glamour that epitomises the hotel. The Wellesley boasts some of the largest open deck spaces of any 56m on the water - ideal for entertaining family and friends, or hosting corporate events in utter privacy. The ultimate yacht for discerning charterers.

KEY FEATURES

- 1** Massive rebuild, extension & refit in 2016 (almost as a new yacht)
- 2** 6 guest staterooms, including an upper deck master and lower deck full-beam master
- 3** Cigar club lounge
- 4** 1st class charter crew including on-board masseuse
- 5** Towed tender (available upon request)
- 6** Large selection of water sports toys and exercise equipment



Aft view



Profile



Profile



View from above



Bow view



Profile



Profile underway



View from above



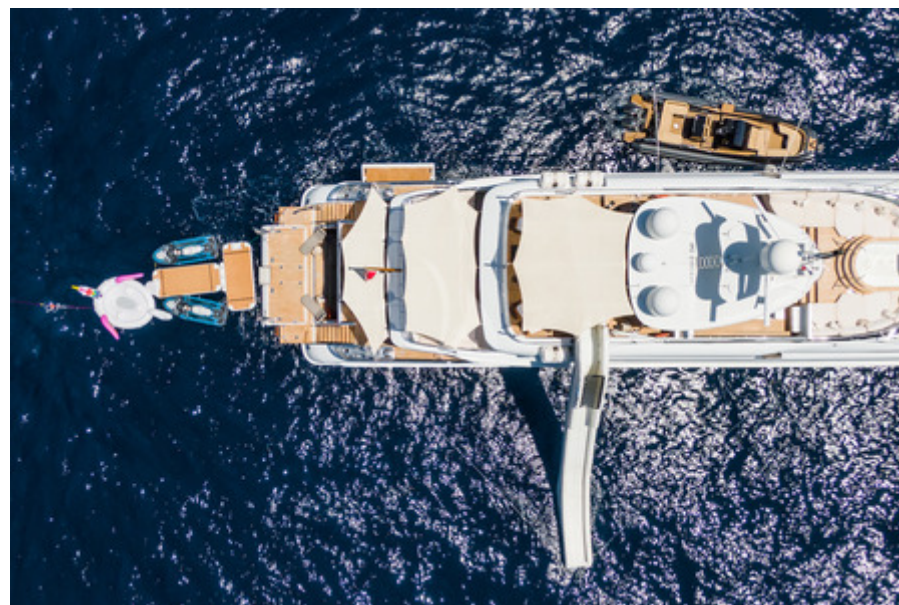
Profile



At anchor



Waterline view



View from above



Running



At anchor



Portofino at night



Tender profile



Sundeck



Sundeck jacuzzi



Sundeck from above



Sundeck



Sundeck



Sundeck dining



Sundeck BBQ area



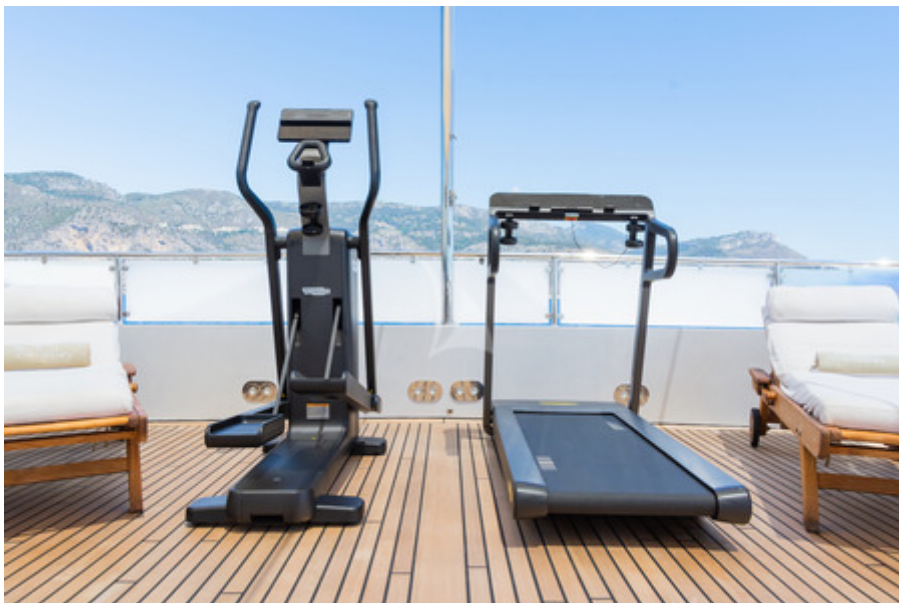
Sundeck slide



Sundeck loungers and cardio machines



Free weights



Sundeck cardio machines



Upper deck view



Upper deck lounge area



Upper deck lounge



Upper deck lounge



Upper deck lounge



Main deck seating area



Main deck seating area



Main deck seating area



Main deck dining



Main deck dining table



Evening tablescape



Swim platform from above



Beach club



Beach club



Relaxing



Cigar lounge



Cigar lounge by night



Cigar cabinet



Main saloon



Main saloon



Main saloon by night



Indoor dining room



Interior corridor



Upper deck master stateroom



Upper deck master stateroom



Master bathroom robes



Upper deck twin convertible stateroom



Upper deck twin bathroom



Main deck forward VIP stateroom



Main deck forward VIP stateroom



Main deck forward VIP bathroom



Lower deck master stateroom



Lower deck master stateroom



Lower deck master wardrobe



Lower deck master bathroom



Lower deck double stateroom



Lower deck double stateroom



Lower deck twin convertible stateroom



Lower deck twin convertible stateroom



Lower deck twin bathroom



Seabob aft view



Seabobs



E-foil



Jet skis



Toy set up



Seabob underwater



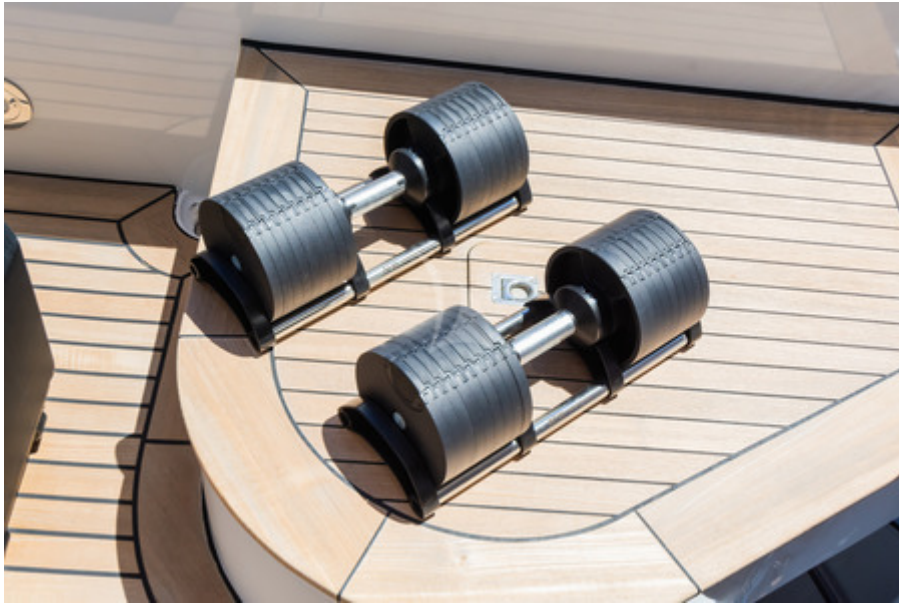
Tender ride



Spa welcome



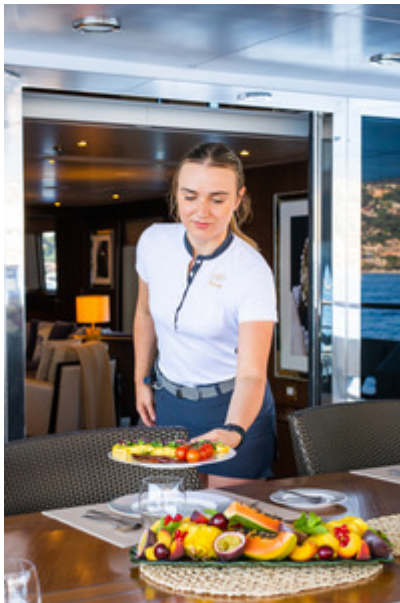
Massage



Free weights



Breakfast set up



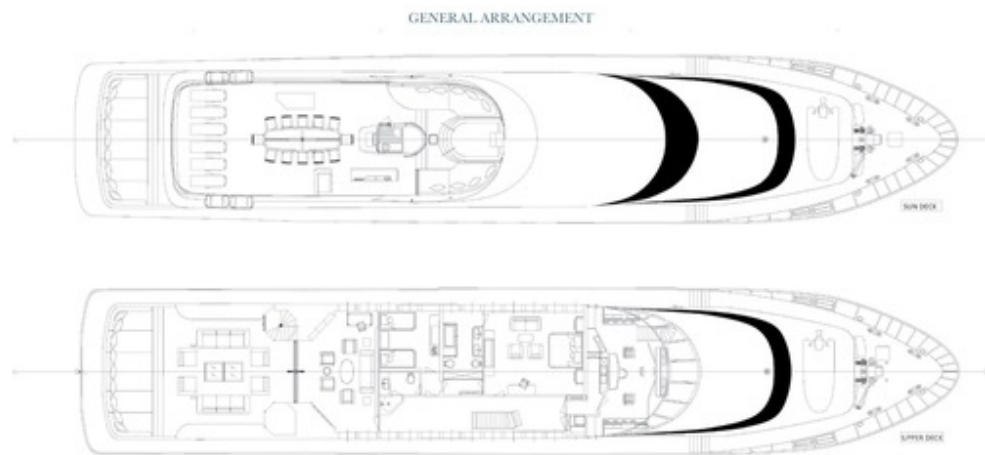
Service



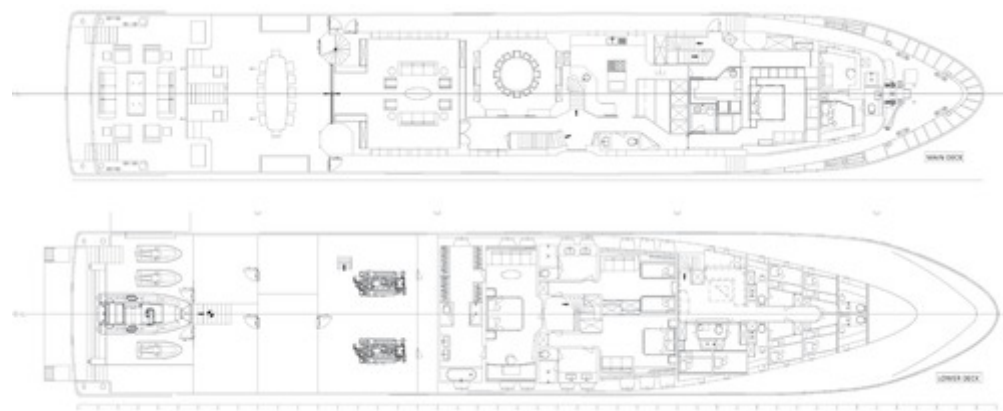
Bridge



Galley



Sun and upper deck GA



Main and lower deck GA

SPECIFICATIONS

ACCOMMODATION

Number of Guests: 12

Number of Cabins: 6

Cabin Configuration: 4 Double, 2 Convertible

Bed Configuration: 1 Pullman, 3 King, 1 Queen, 4 Single

EQUIPMENT

Engines: 2 x MTU 12V396TE74

Cruising Speed: 13 knots

Fuel Consumption: 380 Litres/Hr

WATERSPORTS

Tenders + Toys: 9.14m ZAR custom tow tender with 2 x

Evinrude 300HP (upon request)

Williams Diesel Jet 505 (5.05m)

2 x Sea-Doo sit down jetskis

2 x F5 Seabobs

Inflatable slide (from sundeck)

Banana & donuts

2 x inflatable kayaks

Paddle boards

Waterskis & wakeboard, kneeboard, skurf board

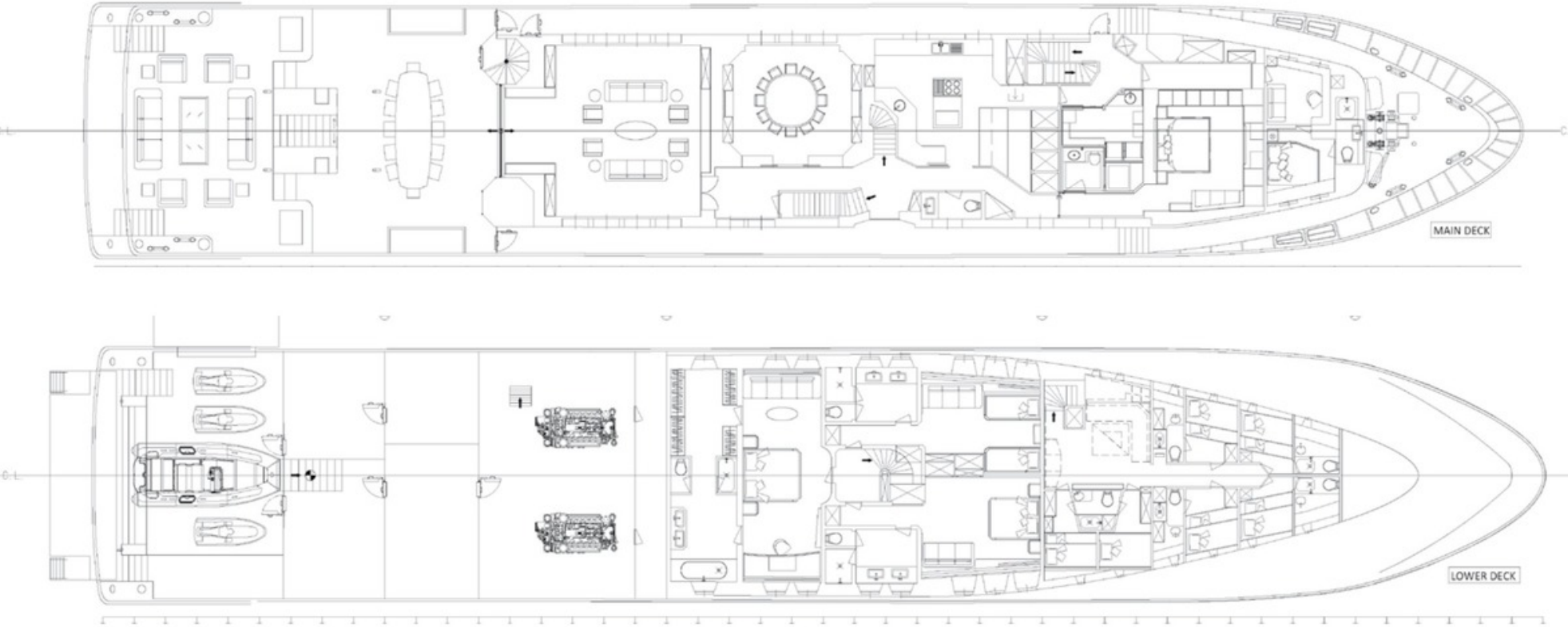
Extensive fishing equipment

Golf gear for swim platform (balls are biodegradable

fish food which need to be ordered at charterer's

expense if requested)

LAYOUT



Disclaimer

This document is not contractual. All specifications are given in good faith and offered for informational purposes only. The publisher and company do not warrant or assume any legal liability or responsibility for the accuracy, completeness, or usefulness of any information and/or images displayed. Yacht inventory, specifications and charter prices are subject to change without prior notice. None of the text and/or images used in this brochure may be reproduced without written consent from the publisher.